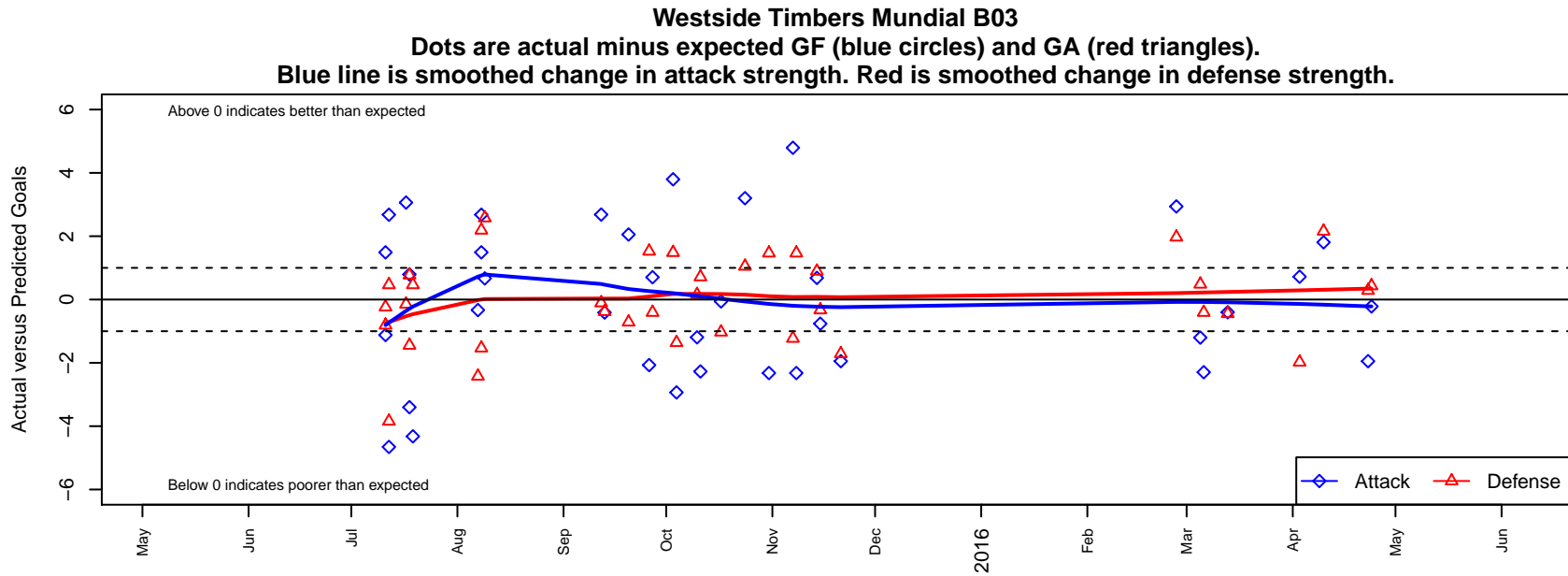


Westside Timbers Mundial B03

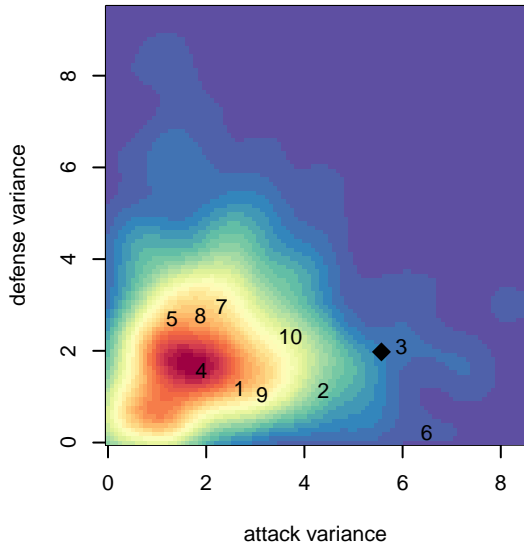
Westside Timbers
 Beaverton, OR
 B03 total strength=570
 attack=0.89 defense=0.23
 fall league = PTT B03 Div 2 Green
 spr league = Spr OYS B03 Div 2 Green

alt names used:
 WT B03 Mundial
 WST B03 Mundial
 Westside Timbers B03 Mundial
 Westside Timbers B03 Mundial
 Westside Timbers B03 Mundial
 WST B03 MUNDIAL

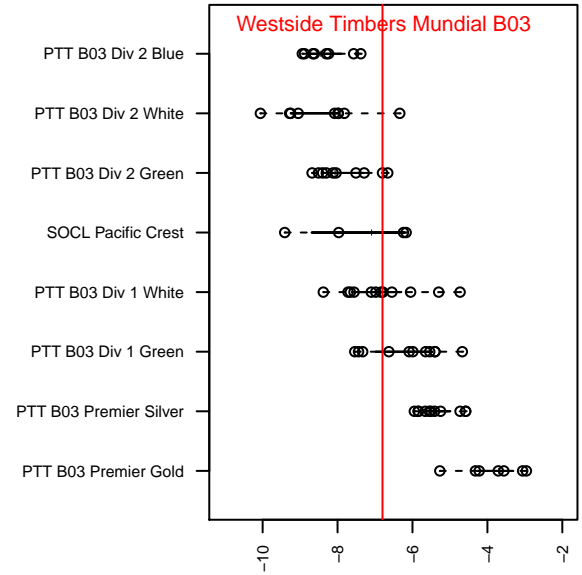
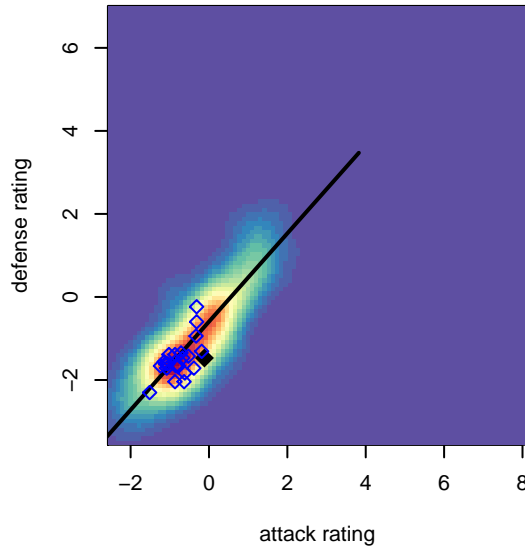
Venues played:
 2015 PCU Summer Classic U12 Silver Red
 2015 Beaverton Cup BU12 Bronze
 2015 Chinook Cup U12
 2015 PTT B03 Division 2 Green
 2015 OYS Founders Cup B03
 2015 Spr OYS B03 Division 2 Green



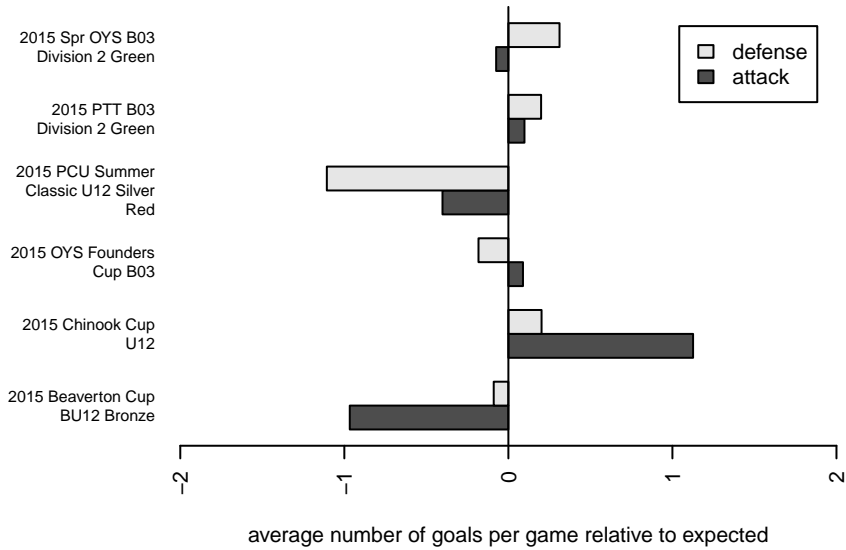
**attack and defense variance (black dot)
relative to other teams
and top 10 in region**



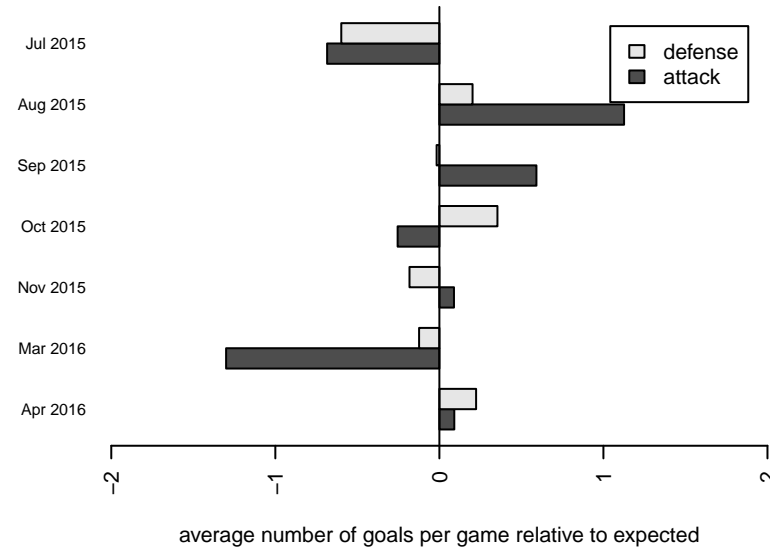
**attack and defense rating
relative to others at age
and all opponents in last 13 months**



Performance relative to 13 month average



Performance relative to 13 month average



| date | home | | away | | venue | pred.home | pred.away |
|------------|---------------------------------|----|-----------------------------------|----|-----------------------------------|-----------|-----------|
| 2016-04-24 | Westside Timbers Copa TS B03 | 2 | Westside Timbers Mundial B03 | 3 | 2015 Spr OYS B03 Division 2 Green | 2.43 | 3.22 |
| 2016-04-23 | Westside Timbers Mundial B03 | 0 | Washington Timbers Burgundy B03 | 3 | 2015 Spr OYS B03 Division 2 Green | 1.95 | 3.29 |
| 2016-04-10 | Westside Timbers Mundial B03 | 6 | WUSC Barcelona Navy B03 | 0 | 2015 Spr OYS B03 Division 2 Green | 4.19 | 2.16 |
| 2016-04-03 | Westside Timbers Mundial B03 | 5 | BSC HR Black-Legends B03 | 4 | 2015 Spr OYS B03 Division 2 Green | 4.28 | 2.02 |
| 2016-03-13 | CUSC Red B03 | 3 | Westside Timbers Mundial B03 | 3 | 2015 Spr OYS B03 Division 2 Green | 2.55 | 3.40 |
| 2016-03-06 | NEU PDX Black B03 | 3 | Westside Timbers Mundial B03 | 3 | 2015 Spr OYS B03 Division 2 Green | 2.59 | 5.30 |
| 2016-03-05 | Westside Timbers Mundial B03 | 5 | FC Salmon Creek Juventus Blue B03 | 2 | 2015 Spr OYS B03 Division 2 Green | 6.20 | 2.48 |
| 2016-02-27 | BSC Portland Gold-Tiempo B03 | 1 | Westside Timbers Mundial B03 | 6 | 2015 Spr OYS B03 Division 2 Green | 2.97 | 3.06 |
| 2015-11-21 | Westside Timbers Mundial B03 | 0 | Washington Timbers Burgundy B03 | 5 | 2015 OYS Founders Cup B03 | 1.95 | 3.29 |
| 2015-11-15 | Westside Timbers Mundial B03 | 3 | PCU Black B B03 | 2 | 2015 OYS Founders Cup B03 | 3.76 | 1.67 |
| 2015-11-14 | Westside Timbers Mundial B03 | 6 | FC Portland Red B03 | 1 | 2015 OYS Founders Cup B03 | 5.32 | 1.89 |
| 2015-11-08 | Eastside Timbers White B03 | 1 | Westside Timbers Mundial B03 | 3 | 2015 OYS Founders Cup B03 | 2.47 | 5.32 |
| 2015-11-07 | CSC Storm White B03 | 3 | Westside Timbers Mundial B03 | 10 | 2015 OYS Founders Cup B03 | 1.77 | 5.21 |
| 2015-10-31 | Westside Timbers Mundial B03 | 3 | Eastside Timbers White B03 | 1 | 2015 PTT B03 Division 2 Green | 5.32 | 2.47 |
| 2015-10-24 | Westside Timbers Mundial B03 | 8 | Timber Barons B03 | 1 | 2015 PTT B03 Division 2 Green | 4.80 | 2.05 |
| 2015-10-17 | BSC Portland Gold-Tiempo B03 | 4 | Westside Timbers Mundial B03 | 3 | 2015 PTT B03 Division 2 Green | 2.97 | 3.06 |
| 2015-10-11 | PCU Black B03 | 1 | Westside Timbers Mundial B03 | 3 | 2015 PTT B03 Division 2 Green | 1.71 | 5.27 |
| 2015-10-10 | WUSC Barcelona Navy B03 | 2 | Westside Timbers Mundial B03 | 3 | 2015 PTT B03 Division 2 Green | 2.16 | 4.19 |
| 2015-10-04 | LASC Champions FC B03 | 4 | Westside Timbers Mundial B03 | 1 | 2015 PTT B03 Division 2 Green | 2.64 | 3.93 |
| 2015-10-03 | Westside Timbers Mundial B03 | 10 | FC Salmon Creek Juventus Blue B03 | 1 | 2015 PTT B03 Division 2 Green | 6.20 | 2.48 |
| 2015-09-27 | Westside Timbers Mundial B03 | 6 | NEU PDX Black B03 | 3 | 2015 PTT B03 Division 2 Green | 5.30 | 2.59 |
| 2015-09-26 | Westside Timbers Mundial B03 | 2 | Academia Leon B03 | 0 | 2015 PTT B03 Division 2 Green | 4.07 | 1.52 |
| 2015-09-20 | Washington Timbers Burgundy B03 | 4 | Westside Timbers Mundial B03 | 4 | 2015 PTT B03 Division 2 Green | 3.29 | 1.95 |
| 2015-09-13 | Westside Timbers Mundial B03 | 4 | Bend FC Timbers White B03 | 2 | 2015 PTT B03 Division 2 Green | 4.41 | 1.62 |
| 2015-09-12 | FC Portland Red B03 | 2 | Westside Timbers Mundial B03 | 8 | 2015 PTT B03 Division 2 Green | 1.89 | 5.32 |
| 2015-08-09 | Southside SC Azul B03 | 1 | Westside Timbers Mundial B03 | 2 | 2015 Chinook Cup U12 | 3.58 | 1.33 |
| 2015-08-08 | Southside SC Blanco B03 | 1 | Westside Timbers Mundial B03 | 4 | 2015 Chinook Cup U12 | 3.19 | 2.51 |
| 2015-08-08 | Westside Timbers Mundial B03 | 8 | Eastside Timbers White B03 | 4 | 2015 Chinook Cup U12 | 5.32 | 2.47 |

| date | home | | away | | venue | pred.home | pred.away |
|-------------|-------------------------------|---|------------------------------|----|--|------------------|------------------|
| 2015-08-07 | Southside SC Azul B03 | 6 | Westside Timbers Mundial B03 | 1 | 2015 Chinook Cup U12 | 3.58 | 1.33 |
| 2015-07-19 | Eastside Timbers White B03 | 2 | Westside Timbers Mundial B03 | 1 | 2015 Beaverton Cup BU12 Bronze | 2.47 | 5.32 |
| 2015-07-18 | Westside Timbers Mundial B03 | 6 | CSC Storm White B03 | 1 | 2015 Beaverton Cup BU12 Bronze | 5.21 | 1.77 |
| 2015-07-18 | CUSC Red B03 | 4 | Westside Timbers Mundial B03 | 0 | 2015 Beaverton Cup BU12 Bronze | 2.55 | 3.40 |
| 2015-07-17 | Westside Timbers Brazuca B03 | 1 | Westside Timbers Mundial B03 | 12 | 2015 Beaverton Cup BU12 Bronze | 0.85 | 8.94 |
| 2015-07-12 | Foothills SC Celtic Green B03 | 6 | Westside Timbers Mundial B03 | 2 | 2015 PCU Summer Classic U12 Silver Red | 2.16 | 6.66 |
| 2015-07-12 | Eastside Timbers White B03 | 2 | Westside Timbers Mundial B03 | 8 | 2015 PCU Summer Classic U12 Silver Red | 2.47 | 5.32 |
| 2015-07-11 | Westside Timbers Mundial B03 | 3 | PCU Red 4 B03 | 2 | 2015 PCU Summer Classic U12 Silver Red | 4.12 | 1.76 |
| 2015-07-11 | Southside SC Blanco B03 | 4 | Westside Timbers Mundial B03 | 4 | 2015 PCU Summer Classic U12 Silver Red | 3.19 | 2.51 |